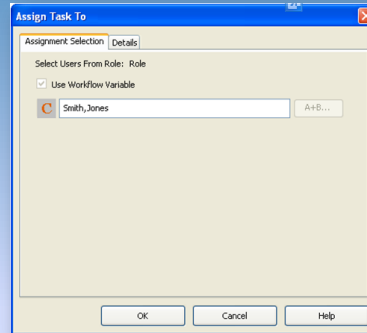


Java Actions – Server Actions

- Assign Task To User
- Assign Task to Performer of Completed Activity
- Escalate Task
- Evaluate Script
- Get Performer
- Get Process Initiator
- Make Choice
- Set Activity Priority
- Set Assignee From Relationship
- Set Process Instance Name
- Set Process Instance Priority
- Set Process Instance Description
- UDA Assignment

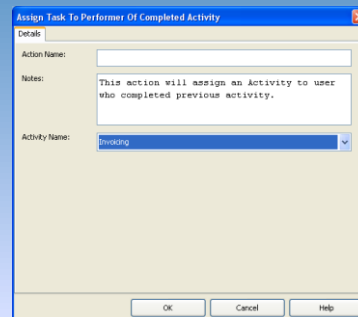
Assign Task To User

- Assign task to user or users at runtime (dynamic task assignment)
- Assign using
 - Comma separated list of users
 - UDA
 - Java script
- **Note:**
 - *Can assign the activity only to users within the Role to which the activity is currently assigned*
 - *User must exist in the system, or node will go to error state.*



Assign Task to Performer of Completed Activity

- Assign task to user who completed previous task.
- User from any of the completed activity can be used for assignment.
- Assign using
 - Select the name of completed activity from dropdown.
- **Note**
 - *Can assign the activity only to users within the Role to which the activity is currently assigned*



Set Assignee From Relationship

- Assign task based on relationship e.g. *“manger of the user who completed previous task”*
- Relationship source
 - Relation (“manager”) with user of previous activity
 - Relation with username in the UDA

Source	Relationship	Target
Jim	Manager	Robert
Fujitsu	Executive	Bob

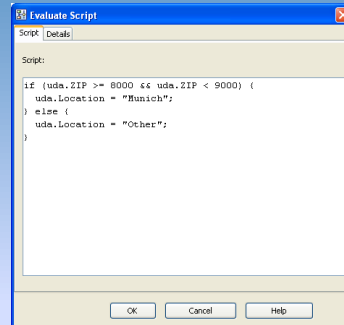
- **Note**
 - Relationship mappings should be stored as user profiles in the Directory Service or local user store, where the source value is a user ID, relationship is a user attribute name, and target value is a user attribute value

Escalate Task

- Escalate task to another user if SLAs are violated.
- Same assignment option as “Assign Task to User” action.
- **Note:**
 - Can be used in an Activity, Voting and Compound node
 - can be used only as Due Date and Timer’s Timer Action

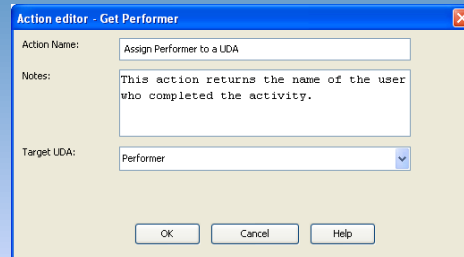
Evaluate Script

- Execute a JavaScript function
- Can be used to change UDA values or perform other BPM actions.
- Example:
 - Change value of *Location* UDA based on *ZIP* UDA value



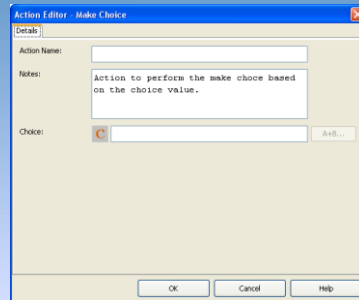
Get Performer

- identify the user who completed the task
- Assign the user name to a process UDA
- **Note:**
 - Can be used only as an epilogue action in Activity, Voting and Compound node
 - Can be used to get the performer of the current node (node it's assigned to) only



Make Choice

- Make choice on nodes automatically in case SLAs are violated.
- Choice name can be typed in or assigned from a UDA or script
- **Note:**
 - *Can be used only in Activity, Voting and Compound node*
 - *Can be used only as Timer action for Due Dates and Timers*



Other Server Actions

- **Get Process Initiator**
 - Assign the user name, who started current process instance, to a UDA.
- **Set Activity Priority**
 - Assign/Change priority of activities
 - *Available for Activity, Voting and Compound Nodes*
 - *Can be used only as a Prologue Action*
- **Set Process Instance Priority**
 - Assign/Change priority of activities
 - Constant, UDA or script can be used for assignment
 - *Values should be integer or long*

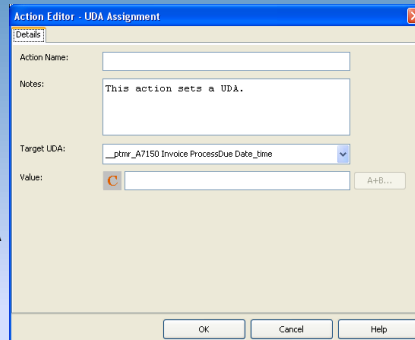
- Set Process Instance Name
 - Change/Set the name of Process Instance
 - UDA, Constant or script can be used to assign the name

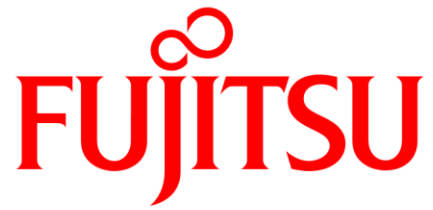
- Set Process Instance Description
 - Change/Set the name of Process Instance description
 - UDA, Constant or script can be used for assigning the value

- Assign/change UDA value

- Assignment Option
 - Select target UDA from drop down
 - Assign constant value
 - Assign value from another (source) UDA
 - Assign value from script

- Note
 - *Data type of source UDA or the source data must be compatible with the data type of Target UDA*





shaping tomorrow with you